



We Take Pride in **Nation Building...**



A LEGACY OF TRUST AND EXCELLENCE

8 Airports

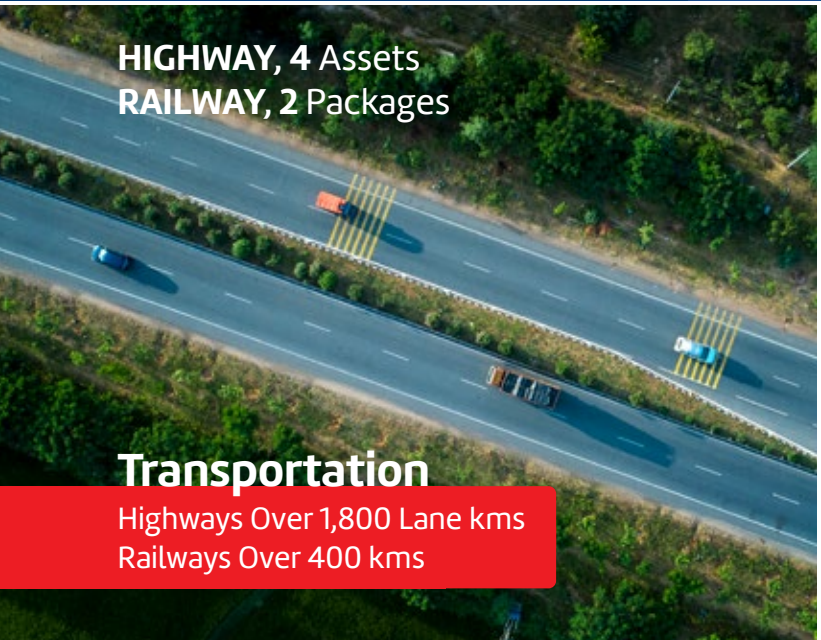
Airports

Handling over **100 Mn** passengers

13 Projects
2 Coal Mines

Energy

Over **3000 MW** Installed Capacity



HIGHWAY, 4 Assets
RAILWAY, 2 Packages

Transportation

Highways Over 1800 Lane kms
Railways Over 400 kms



Urban Infrastructure

1 Special Investment Region



Varalakshmi Foundation

Present in 15 Locations

OUR VISION

“GMR Group will be an institution in perpetuity that will build entrepreneurial organizations making a difference to society through creation of value.”

OUR VALUES & BELIEFS



Humility

We value intellectual modesty and dislike false pride and arrogance



Entrepreneurship

We seek opportunities – they are everywhere



Teamwork and relationships

Going beyond the individual, encouraging boundary less behaviour



Deliver the promise

We value a deep sense of responsibility and self discipline, to meet and surpass commitments made



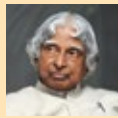
Learning & Inner Excellence

We cherish the life long commitment to deepen our self awareness, explore, experiment and improve our potential



Social responsibility

Anticipating and meeting relevant and emerging needs of society



Respect for individual

We will treat others with dignity, sensitivity and honour

OUR BUSINESSES

Airports | Energy | Transportation | Urban Infrastructure | Services Business

We have the ability to convert opportunities into sound business propositions. Our strengths lies in bidding, financing, project & operations management and partnership development. These competencies have helped us in developing an informed judgement and a wide sectoral presence.

Apart from the above, our competencies also involve bidding for large Airport, Energy and Transportation projects enabling us to extend our presence in international markets.

The groups businesses are classified under its two listed entities – GMR Infrastructure Limited (GIL) and GMR Power and Urban Infrastructure Limited (GPUIL).



GMR INFRASTRUCTURE LIMITED

GMR Infrastructure Limited (GIL) is engaged in development, operation and maintenance of airports along with offering integrated security solutions.



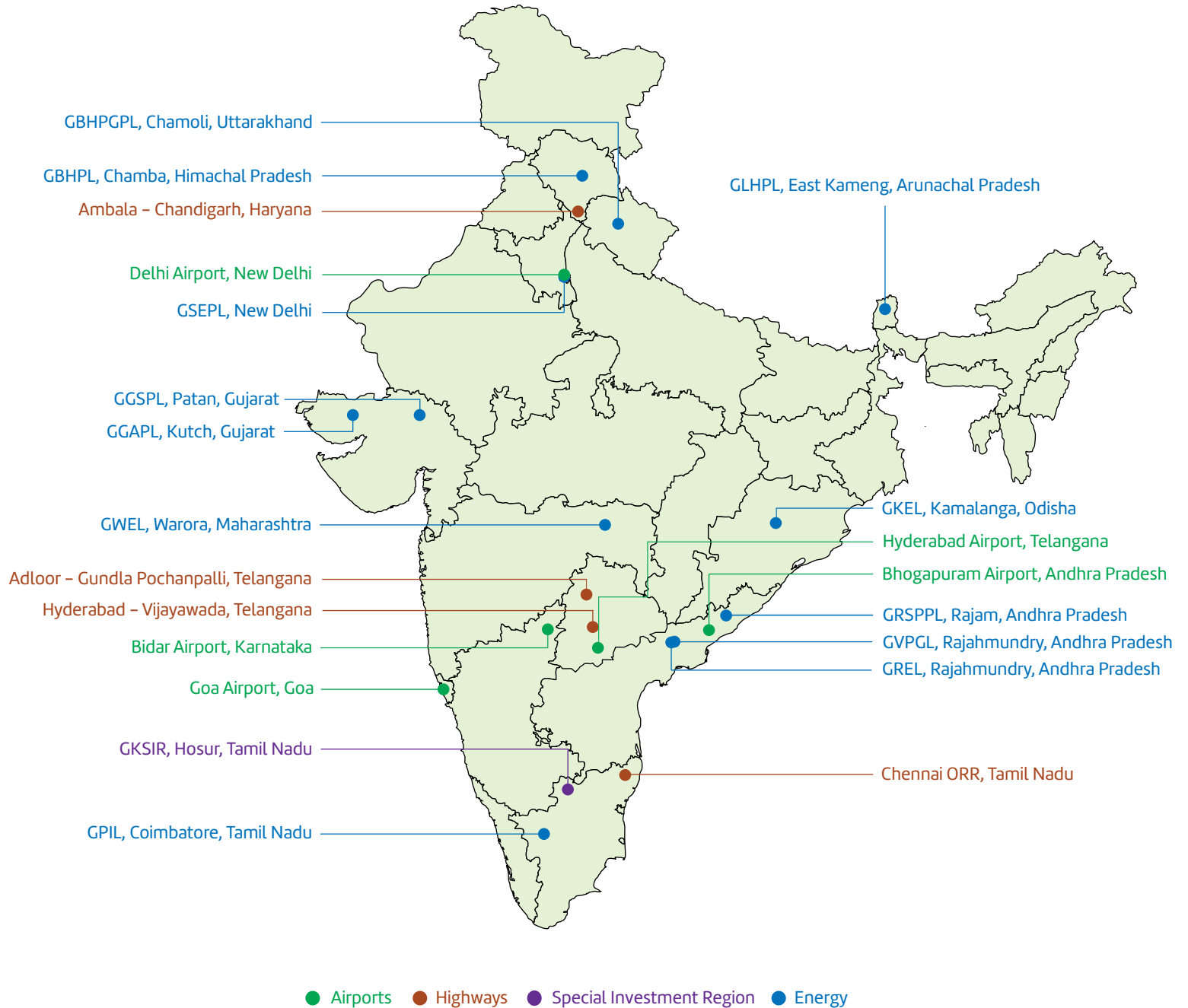
GMR POWER & URBAN INFRA LIMITED

GMR Power and Urban Infra Limited (GPUIL) holds expertise in the sectors of Energy, Urban Infrastructure and Transportation.

OUR REACH

We have 22 domestic projects and 5 international projects.









AIRPORTS

GMR entered the airports business by winning the bid for the Hyderabad Airport in 2003. Today it is the largest private operator in Asia and amongst the largest globally, handling more than 100 million passengers annually. It operates the iconic Delhi Airport, which is the largest and fastest growing airport in India. It also runs Hyderabad Airport, a pioneering greenfield airport known for several technological innovations. The company is also operating the architecturally renowned Mactan Cebu International Airport in Cebu, Philippines in partnership with Megawide.

The Group is currently developing four major airport projects, in India, Greece and Indonesia. Goa and Visakhapatnam airports in India are poised to transform the economy and landscape of the surrounding areas when ready. Crete airport in Greece will similarly play a significant role in the local economy of the region. Expanding its overseas footprint, GMR Airports has won the bid to develop and operate the Kualanamu International Airport in Medan, Indonesia.





Indira Gandhi International Airport, New Delhi (DEL)

The Group entered into a long-term agreement to operate, manage and develop the Delhi Airport following a competitive bidding process. The Public Private Partnership (PPP) project is being driven by Delhi International Airport Limited (DIAL) which is a joint venture company between GMR Group (64%), Airport Authority of India (26%) and Fraport AG (10%).

The Brownfield development of Indira Gandhi International (IGI) Airport commenced in April 2006. Phase 1 of the project comprising of the third runway (29-11) and an integrated Terminal 3 (T3) was completed in 37 months. The state-of-the-art integrated terminal building (T3) was inaugurated on 3rd July 2010. DIAL also successfully commissioned the third runway measuring 4.43 km in length. This is amongst the longest in Asia. The runway is CAT III B compliant and capable of handling A380 size aircraft.

Since 2006, when the airport was handed over to DIAL, the passenger volume increased from 16 million in 2006 to over 69 million in 2018-19, making Delhi the busiest airport in the country. With an impressive Annual Growth Rate, IGI Airport has outpaced its competition and has grown much faster than any other commercial airport in the Indian subcontinent region.

Further, DIAL will be undertaking capacity expansion which will include development of a fourth runway and a total capacity of 140 million passengers per annum.

Key features:

- India's largest, busiest and only airport with 3 runways and 3 operational passenger terminals
- Consistently rated amongst the Top Airports in the World by Airports Council International (ACI) for Airport Service Quality (ASQ)
- No. 1 Cargo Airport in India; handling ~1 million MT cargo annually
- India's first Airport to commission a Solar Power Plant (7.8 MW) on Airside
- First Airport in Asia Pacific region to achieve "Level 4+, Transition" under Airport Carbon Accreditation of ACI
- High speed metro connectivity to the city centre
- India's first automated multi-level car park with a capacity of 4,300 cars



Delhi Aerocity – The New Heart of NCR

Aerocity at IGI Airport is being developed as a “Safe, Smart and Sustainable Commercial District”. It provides highly connected and interactive urban precincts for socio-economic growth of the airport community. Being planned by an international team of designers, Aerocity is now proving to be the pride of the city with a world-class commercial zone, well-developed infrastructure, multi-modal transit connectivity and mixed use of space, including an array of international brand hotels, retail spaces and Grade A offices. Aerocity’s first phase, named hospitality district, already hosts more than 15 hotels, three Grade A offices and retail spaces with well laid out public amenities. The next phase of Aerocity will see well-curated and planned precincts, each having its own urban character, public spaces and world class security. It now enjoys seamless connectivity with both Airport Express Metro and city Metro line, connecting Noida and North West Delhi to the airport terminals.

The pedestrian friendly streetscape, ample public spaces and recreational amenities are the high point of the Delhi Aerocity. The use of landscape elements, street furniture and graphic signage provides an integrated design experience through the entire airport landside. The development of the next phase of Aerocity will set a benchmark for city developments and for sustainability.





HYDERABAD RAJIV GANDHI
INTERNATIONAL AIRPORT



Rajiv Gandhi International Airport, Hyderabad (HYD)

Rajiv Gandhi International Airport (RGIA) in Hyderabad, Telangana, is amongst the first Greenfield airports in India. The airport was developed through the PPP model by a joint venture. It is promoted by the GMR Group (63%) in partnership with the Government of Telangana (13%), Malaysia Airports Holdings Berhad (11%) and the Airports Authority of India (13%). Hyderabad Airport was commissioned in a record time of 31 months in March 2008, with an initial capacity of 12 million passengers per annum (MPPA) and 1,50,000 MT of Cargo handling capacity per annum.

Key features:

- Only Greenfield airport in the country to have a stand-by runway
- Second longest runway in India, measuring 4,260 mts., which is A380 compatible
- Modular terminal building using state-of-the-art IT technology
- Integrated Passenger terminal building spread over an area of 1,17, 000 sq. mts. of floor space
- 42 aircraft parking stands (12 contact stands + 30 remote stands) and five dedicated stands for freighter aircraft
- 142 Common User Terminal Equipment (CUTE) check-in desks, of which 16 are self-check-in
- 17 bed Apollo Hospital in the Passenger Terminal Building
- Car park facility for 3,500 cars
- Fully automated Airport Operations Control Centre (AOCC)
- A contemporary hotel under Novotel brand equipped with a spa, business conference facilities, restaurants and bars
- First Airport in India to get LEED (Leadership in Energy & Environmental Design) "Silver" rating
- A 10MW Solar Power Plant for its captive use

GMR Hyderabad International Airport Ltd. (GHIAL) has embarked on the expansion of the airport, with the vision to make the upgraded and expanded Hyderabad Airport into a fully tech-enabled Smart Airport. The current expansion project will see creation of additional capacity across terminal, airside and landside facilities at the airport and will result in more than doubling the airports capacity in phases.



Hyderabad Aerocity – India’s Largest Integrated Airport City

GMR Hyderabad International Airport Limited (GHIAL) is developing an integrated airport city adjoining the Hyderabad International Airport. The objective is to create an ecosystem that will benefit both Airport as well as the regional economy. The city will focus on sustainable development using Green Technologies and new generation digital infrastructure along with quality physical infrastructure.

Hyderabad Aerocity is earmarked for “Theme”/“Port” based development which includes activity centres such as Offices, Exhibition & Convention, Hospitality, Leisure & Entertainment, Retail, Healthcare, Education.

It has two Special Economic Zones (SEZ) viz. a Multi-product SEZ with focus on Aerospace & Defence related activities and an International Financial Services Centre (IFSC) based Multi-services SEZ. The Aerospace & Defence Park that offers both SEZ and Domestic Tariff Area (DTA) options also has India’s only Airport based Free Trade Zone.

With such a compelling value proposition, Hyderabad Aerocity has already attracted several reputed global and Indian brands that have set-up their facilities including Office, Retail, Institutes, Manufacturing/Assembly units and Trading/Warehousing facilities.





Mactan Cebu International Airport, Cebu (CEB), Philippines

Mactan Cebu International Airport (MCIA), the gateway to the Visayas and Southern Philippines, is the second largest Airport facility in Philippines. The commencement of operations from the new Terminal 2 and the renovation of Terminal 1 has enhanced the passenger handling capacity to 15.8 mn. In 2018 the airport hosted 11.5 million passengers.

GMR Infrastructure in partnership with Megawide Construction Corporation of Philippines entered into a concession agreement to manage the terminal operations and other related areas of the Airport. Under the Public-Private partnership framework, the second terminal, T2, was commissioned which became operational on 1st July, 2018. GMCAC undertook this capital extensive project and delivered a world class terminal with a welcoming ambience that is distinctly Filipino. The existing Terminal has been rehabilitated to reduce the congestion as well as meet the growing passenger traffic.

With a total of 23 international destinations, 28 domestic destinations and 28 partner airline carriers, Mactan Cebu Airport is now a viable choice that connects Cebu to rest of the Philippines and across the globe.

Key features:

- 13 aircraft parking stands with aerobridges and 28 aircraft parking stand served by bus transfers
- Dedicated international and domestic terminals connected by link bridge for the convenient flight connections
- Airport terminals that reflect the rich Cebuano heritage and culture in a modern design
- A total of 110 check-in counters for international and domestic flights for passenger convenience
- Unique and exciting retail facilities including shopping and food & beverage
- Enhanced in-line automated baggage handling system
- Adequate parking facilities for passengers and visitors
- Airport village mall complex adjoining the terminal with retail and entertainment options





GMR Goa International Airport, Mopa

GMR Goa International Airport Limited (GGIAL), a subsidiary of GMR Airports Limited (GAL), is developing a Greenfield Airport at Mopa on a Public Private Partnership (PPP) model, with a scope to Design, Build, Finance, Operate and Transfer (DBFOT). The concession agreement has been signed between GMR Goa International Airport Ltd. (GGIAL) and the Government of Goa for 40 years with a possible extension of another 20 years through a bid process. Goa is a state in western India with approximately 100-km long coastline with tourism as the primary industry. It handles 13% of all foreign tourist arrivals in India. The Airport Project is located approximately 35 kms North of Panjim, the Goa state capital.

The total land allocated is ~2,100 acres which includes 232 acres for Aerocity Development. GGIAL would be developed in stages initially to service about 4.4 million passengers per annum and will be scaled up as per traffic growth demands.

Key Features:

- Fully integrated terminal with 24x7 Operations
- Modular terminal building with state of art IT technology
- 3750 metres code-E compliant runway with CAT 1 landing facility
- Sufficient parking stands with passenger boarding bridges and night parking facility
- Fully automated Airport Operations control centre (AOCC)
- Overall passenger growth potential ~ 18%
- Saturation Capacity in excess of 30 million passengers per annum
- This Airport will provide significant impetus to the tourism industry in Goa and will be a catalyst for socio-economic development of the region



Heraklion Crete International Airport, Crete, Greece

Crete is the second largest International tourist destination in Greece after its capital, Athens. Heraklion Airport is the largest airport in the Crete region. With the passenger traffic of ~8 million passengers per annum, it commands 17% of the total International traffic into Greece. The new Heraklion International Airport at Kasteli, will replace the existing airport. The Airport is being developed by GMR in consortium with local partner TERNA S. A. The scope of the project includes Design, Construction, Finance, Operation and Maintenance of the Airport.

Greece is a well-established leisure destination, with ~27.2 Mn tourists per annum in 2017, growing at almost 10 % from 24.8 Mn in 2016. Travel and Tourism contributes ~20 % of the National GDP. The country has seen a significant rise in the tourist growth at 12% CAGR from 2012-17.

Key features:

- The new airport with adequate passenger handling capacity will replace the existing Heraklion Airport in Crete
- Concession period: 35 years; First Phase construction to be carried out in 60 months
- Expected Initial Capex: ~Euro 520 Mn
- Equity Stake offered to the State: 45.9%
- Consortium: TERNA S.A. and GMR Airports Limited





Bhogapuram International Airport, Andhra Pradesh

GMR Visakhapatnam International Airport Limited (GVIAL), signed the Concession Agreement for the development and operations of Greenfield international airport at Bhogapuram in Andhra Pradesh with the Government of Andhra Pradesh.

The project involves design, build, finance, construction, development, operation and maintenance of Greenfield International Airport at Bhogapuram for the period of 40 years, extendable by additional 20 years through international competitive bidding process.

In Calendar Year 2019, the existing civil enclave at Vishakapatnam Naval Airfield has handled 2.78 million passengers and ~4400 Tons cargo. Over the past 5 years the passenger traffic at the Vizag airport has grown at 21% CAGR while the Airport ranks 5th amongst the custom airports in India in terms of Cargo traffic.

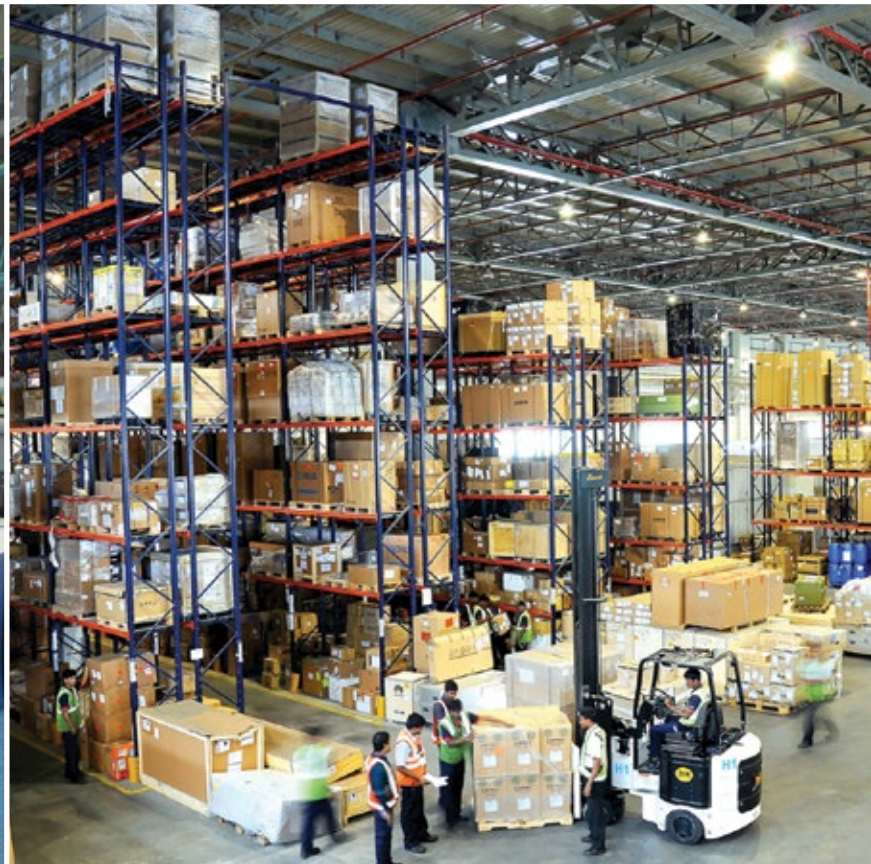
The proposed greenfield airport site lies on the border of Visakhapatnam and Vizianagaram districts, and is approximately 45 kms from Visakhapatnam. The site is strategically located on the east coast and stands to benefit from the vast catchment area surrounding the region. Moreover, the beach corridor development is underway in proximity to the proposed International Airport in Bhogapuram which will provide impetus to retail and hospitality developments in the region.



Kualanamu International Airport, Medan, Indonesia

Marking its entry into the high growth Indonesian Market, GMR has won the bid conducted by Angkasa Pura 2 (AP2) for the development and operations of Kualanamu International Airport in Medan, Indonesia. The airport will be developed and operated in partnership with AP2 which is a state-owned enterprise handling 15 airports in Indonesia including Jakarta. Kualanamu airport serves the bustling city of Medan, the capital of North Sumatra region which is a busy trading hub and has a historical association with India. The airport enjoys seamless connectivity with the city, a large catchment area of 4th largest urban centre in Indonesia and a strategic location in ASEAN. The airport is therefore well placed to be developed as a hub connecting Indonesia and the broader South East Asia market with the Indian subcontinent.

The airport will be developed in 5 phases over the co-operation period of 25 years. At the end of the co-operation period, the airport would have a fully functional second airfield as well as a technology enabled integrated terminal handling over 55 million annual passengers. This development will bring significant connectivity, investment, and economic benefits to the city of Medan, island of Sumatra and Indonesia overall.









ENERGY

GMR Group is a prominent contributor to the Indian power sector through various projects (Hydro, Thermal and Renewable). The Company capitalized on the private investment policy of the government in constructing, developing and managing power plants.

The Group has 13 power generation projects of which 9 are operational and 4 are under various stages of development. With its presence across the entire energy value chain and with installed capacity of over 3000 MW, the Group is well poised to emerge as a leading private power producer in the country.



GMR Vemagiri Power Generation Ltd.

388 MW, Rajahmundry, Andhra Pradesh, India

Commissioned since: September 2006, Fuel Type: Natural Gas

- Strategically located close to Krishna Godavari gas basin
- Long term PPAs with the states of Andhra Pradesh and Telangana
- Advanced gas turbines from GE



GMR Warora Energy Ltd.

600 MW, Warora, Maharashtra, India

Operational since: March 2013, Fuel Type: Coal

- Strategically located near the industrial belt and high growth- oriented western region
- Existing Plant capacity is tied up through PPA with Maharashtra, Tamil Nadu and Gujarat
- Fuel Supply agreement with SECL, subsidiary of CIL
- Connected to PGCIL Sub-station for power evacuation



GMR Kamalanga Energy Ltd.

1050 MW, Dhenkanal, Odisha, India

Operational since: April 2013, Fuel Type: Coal

- Strategically located close to the coal belt
- Fuel supply arrangement with MCL, subsidiary of CIL
- Long term PPAs with the states of Odisha, Haryana & Bihar
- Untied capacity of 15% to take advantage of the merchant market



GMR Rajahmundry Energy Limited

768 MW, Rajamundry, Andhra Pradesh, India

Commissioned since: July 2015, Fuel Type: Gas

- Combined cycle power plant with Natural gas and group's largest gas based power plant
- Strategically located close to Krishna Godavari gas basin
- The Plant has advance Gas Turbine Technology from GE



GMR Generation Assets Ltd.

2.1 MW, Kutch, Gujarat, India

Operational since: July 2011, Fuel Type: Wind

GMR Power Infra Ltd.

1.25 MW, Coimbatore, Tamil Nadu, India

Operational since: Dec 2011, Fuel Type: Wind

- GGAL is one of the first 2.1 MW capacity single Wind Turbine installed in India
- Technology Used: High capacity Wind Turbine (3-Blade) by Suzlon



GMR Gujarat Solar Power Pvt. Ltd.

25 MW, Patan, Gujarat, India

Operational since: March 2012, Fuel Type: Solar

- One of the first 25 MW single Solar Project installed in India. Located in India's 1st Solar Park - Charanka Solar Park, Gujarat
- In 2015 - Plant achieved prestigious ISO 9001:2008 certification for outstanding quality management; ISO 14001:2004 for effective environmental management and OHSAS 18001:2007 for ensuring top quality occupational health and safety. GMR is the only 3 ISO Certified company in entire Charanka Solar Park
- Power Purchase Agreement signed with GUVNL for 25 Years



GMR Solar Energy Pvt. Ltd.

2 MW, IGI Airport, New Delhi, India
Operational since: Feb 2017, Fuel Type: Solar

- It is Company's first MW scale Roof Top Solar Plant – Located at International Cargo Terminal, IGI Airport.

GMR Rajam Solar Power Pvt. Ltd.

1 MW, Rajam, Andhra Pradesh, India
Operational since: March 2016, Fuel Type: Solar

- It is Company's first Hybrid Solar Plant – operating on Solar + Grid + DG Set.



GMR Bajoli Holi Hydro Power Private Limited

180 MW, Chamba, Himachal Pradesh, India

Fuel Type: Hydro

- GMR Bajoli Holi is the group's first hydro power project
- The 180 MW run-of-the-river power facility on the River Ravi is in the final stages of commissioning
- Plant capacity is tied up through PPA with Uttar Pradesh and Delhi International Airport
- ISO 9001, ISO 14001 and OHSAS 18001 certifications from TUV NORD
- The Project has also been registered with UNFCCC as a CDM Project and has completed the WCD audit



GMR Upper Karnali Hydropower Limited

900 MW, Dailekh, Nepal

Under Development, Fuel Type: Hydro

- Prestigious 900 MW project is under advanced stage of development
- Export oriented project with power to be supplied to India and Bangladesh
- Project will be connected with Indian grid through dedicated transmission lines, which will be developed by GMR Energy, through Nepal based subsidiary



Other Projects Under Development

GMR Badrinath Hydro Power Generation Private Limited, 300 MW Hydro based power plant at Chamoli, India

GMR Londa Hydropower Private Limited, 225 MW Hydro based power plant at East Kameng, India



Coal Resources

International Coal Assets

GMR Energy through its subsidiary GMR Coal Resources Pte Limited, Singapore acquired 30% equity stake in PT Golden Energy Mines Tbk (PT GEMS) in 2011.

PT GEMS is engaged in the exploration, mining and marketing of thermal coal sourced from its coal mining concession areas covering 38,165 hectares in South Kalimantan, Central Kalimantan, Jambi and South Sumatra (provinces of Indonesia), Indonesia. PT GEMS owns the right to mine more than 2.1 billion tonnes of thermal coal resources, with coal reserves of about 640 million.

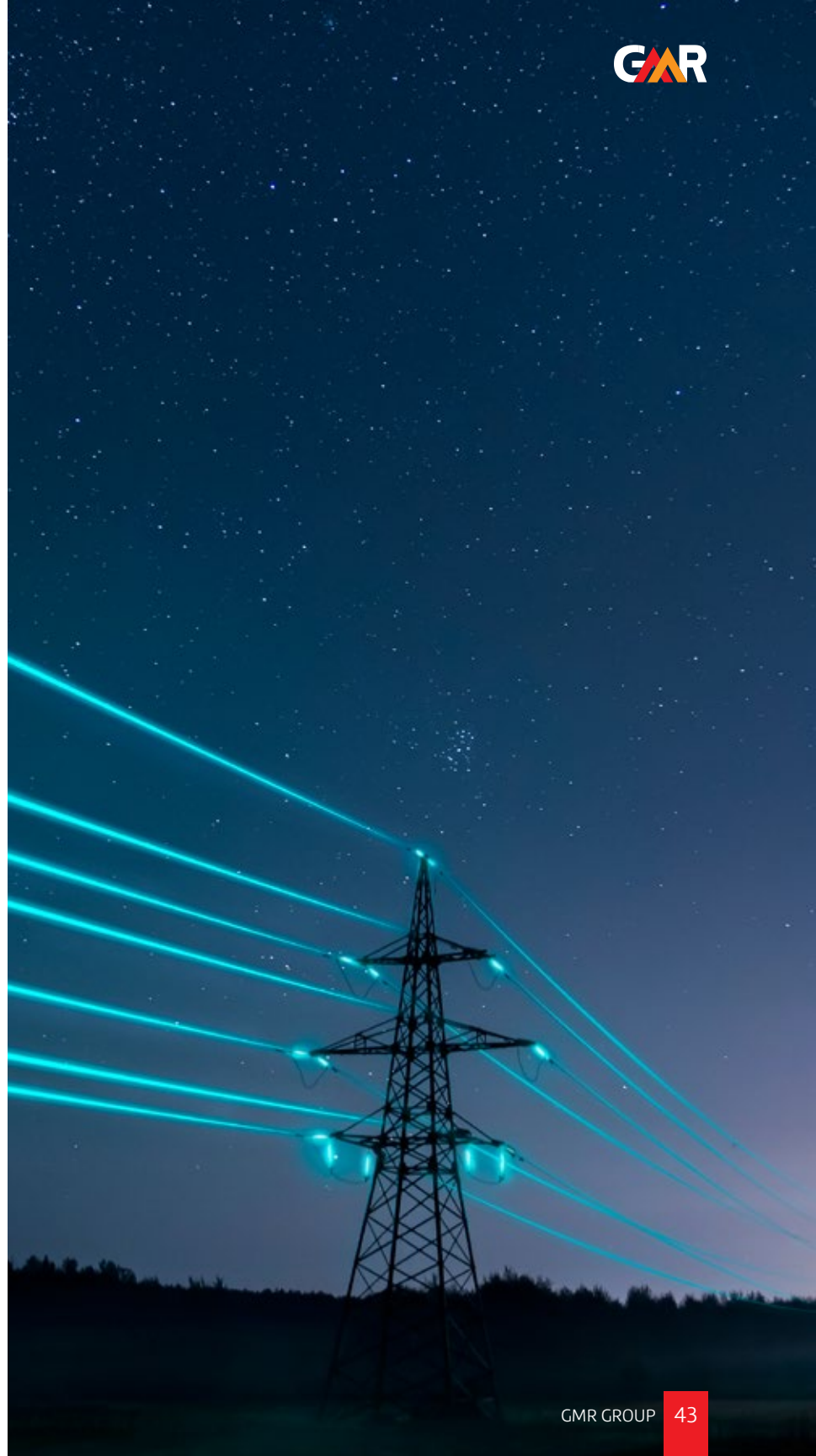


Power Trading

GMR Energy Trading Limited (GMRETL) is one of the leading energy trading companies with pan India presence having Category-1 license issued by Central Electricity Regulatory Commission (CERC).

GMRETL has its head office at New Delhi with 24x7 well equipped Control room. It has regional offices at Mumbai and Hyderabad for Business Development and to provide prompt services to customers.

GMRETL has Trading and Clearing Membership of Indian Energy Exchange (IEX). It has exclusive tie up for sale of power from GMR group's generating assets located all across India with presence in North, East, South and West.







TRANSPORTATION

GMR's Transportation business focuses on surface transport projects including Roads & Railways in both DBFOT and EPC segments.

In Roads and Highways, GMR is one of the leading developers in India with four operating assets adding to total length of over 1,800 Lane kms. Innovation in construction as well as maintenance practices, quality of construction and operational safety are the hallmarks of our projects.

In Railways, GMR has been awarded an EPC contract by Dedicated Freight Corridor Corporation of India Limited (DFCCIL) for the construction of 417 Kms long freight corridor between Mughalsarai and New Bhaupur in Uttar Pradesh with a contract value of nearly ₹ 5,600 crores.



GMR Highways

Hyderabad–Vijayawada Expressways, Andhra Pradesh

The Hyderabad – Vijayawada project on NH-9 run through two states of Telangana and Andhra Pradesh measuring over 1,090 Lane kms on DBFOT Toll. This is the longest highway project of the Group. GMR won the project through an international competitive bidding process. This project connects two major economic hubs namely Vijayawada and Hyderabad, which are witnessing multi-fold growth. Additionally, it also serves as a vital link in facilitating the movement of traffic between Vizag, Hyderabad and Mumbai.

Adloor–Gundla Pochanpalli Expressways, Andhra Pradesh

The Adloor – Gundla Pochanpalli project on NH-7, Andhra Pradesh comprises of 412 Lane Km on BOT Annuity based for 20 years. GMR won the project through international competitive bidding from NHAI in October 2005. Four-Laning of this road has eased traffic congestion and provided a tremendous boost to trade and commerce in the region.

Chennai Outer Ring Road, Tamil Nadu

The Chennai Outer Ring Road measuring 178 Lane kms on DBFOT Annuity based for 20 years is the Groups first state highway project. The Group emerged as the lowest bidder in an international competitive bidding for the project in Tamil Nadu. Construction was completed and provisional commissioning was achieved in June 2013.

Ambala–Chandigarh Expressways, Haryana & Punjab

The Ambala – Chandigarh project on NH-21 & 22, Haryana & Punjab 140 Lane Km on BOT Toll based for 20 years is the Group's first highway project in North India. Completed as per schedule, it involved construction of two crucial fly overs with more than 15 Lane kms of elevated carriageway and a state-of-the-art, 12 Lane toll plaza.



EPC Business

EPC Business established in 2007, is ISO & OHSAS certified with capability to provide turnkey EPC solutions across multiple business sectors like Airports, Energy, Highways, Railways and Urban Infrastructure. The division has delivered several critical projects across the Group and is powered by a highly experienced workforce.

Highways

Completed Projects

- Ambala – Chandigarh on NH-22,21, Haryana, Punjab
- Adloor – Gundla Pochanpalli on NH-7, Andhra Pradesh
- Chennai Outer Ring Road (CORR) on Chennai, Tamil Nadu
- Hyderabad – Vijayawada on NH-9, Andhra Pradesh
- Hungund – Hospet on NH-13, Karnataka
- Thondapalli – Jadcherla on NH-7, Andhra Pradesh
- Tindivanam – Ulundurpet on NH-45, Tamil Nadu

Buildings and Energy

Completed Projects

- Kamalanga Thermal Power Plant, Odisha – Completed Township for power plant – 4 lacs sq. ft. built up area with approach road from NH including ROB.
- GMR Warora Energy Power Plant, Maharashtra – Coal Handling plant – 1200 Mt tonnes/Hr with Water Reservoir, Ash pond, Plant area buildings
- GMR Varalakshmi DAV School, Rajam, Andhra Pradesh – 24 plus capacity classroom with ground and two floors.
- GMRVF Care Hospital, Rajam, Andhra Pradesh – 130 bed capacity Hospital.
- TATA Myst Project, Himachal Pradesh – Construction of Row houses and Villas for Princeton Infrastructure Pvt. Ltd. (a JV unit of TATA Housing) at Kasauli.

Railways

In its endeavour to explore opportunities in different sector, the EPC Division is executing the following projects in Railways Sector:

- RVNL's Jhansi – Bhimsen Project, Uttar Pradesh – Construction of Roadbed, Major & Minor bridges, Track Linking Outdoor, S&T Works, OHE, TSS & General Electrical works from Jhansi (KM 1129.00) to Bhimsen (KM 1195.00).
- RVNL's Multi Modal Transport System (MMTS) Ph – II Corridors in three packages involving Construction of Civil works, Track linking, Yard arrangements, Railway Electrification, Signalling and Telecommunication works in Secunderabad and Hyderabad Divisions of South Central Railway, Andhra Pradesh, India.
- DFCC's Package 201, 202, Uttar Pradesh – Design and Construction of Civil, Structures and Track Works for Double Line Railway involving Formation in Embankments/Cuttings, Ballast on Formation, Track Works, Bridges, Structures, Buildings, Yards, Integration with IR existing Railway System and Testing & Commissioning on Design-Build Lump Sum Basis for Mughalsarai – New Bhaupur Section of Eastern Dedicated Freight Corridor.





URBAN INFRASTRUCTURE

GMR Group is currently developing a large format 'Special Investment Region' (SIR) in Tamil Nadu. Spread over 850 hectares, the Special Investment Region is situated at Krishnagiri, near Hosur.

This SIR is designed and developed by GMR as self-contained eco-system for economic activity and will have world class infrastructure provided by the Group.



Special Investment Regions

Krishnagiri, Tamil Nadu

With an objective of building world class industrial infrastructure in India, GMR Group is setting up a 850 hectare SIR at Krishnagiri, near Hosur, Tamil Nadu. It is strategically located just 45 km from Electronic City, Bangalore and is within the influence zone of the Chennai-Bangalore Industrial Corridor. This location provides a unique advantage of multi-modal connectivity with National and State Highways and a railway line running alongside.

Focus Sectors:

Engineering | Automotive & Auto Ancillary | Defence and Aerospace | Precision Engineering | Machine tools | Electronic Products

Strategic Location on Chennai-Bangalore Industrial Corridor (CBIC):

Roads:

- NH 7 – connects Tuticorin, Coimbatore, Bangalore & Mumbai
- NH 48 – connects Chennai – Bangalore
- NH 66 – connects Pondicherry & Bangalore
- SH 17 & SH 85 – connects Hosur & Krishnagiri via SIR

Railway Network – Broad gauge railway line runs along southern border of project area and there are plans to develop a railway siding, container freight station, warehouses etc.

Container Port:

- Chennai – 3 Major ports – Chennai, Ennore & Kattupalli – 300 – 325 kms
- Krishnapatnam – 420 kms
- Cochin – 465 kms on western coast
- Mangalore – 435 kms on western coast

Infrastructure Highlights:

GMR aims to provide world class Infrastructure – Power, Water supply, Sewerage, Effluent Treatment, Solid Waste Management, Road Network, Street Lighting, Landscaping and Security. Designed to encompass a complete ecosystem, Krishnagiri SIR focuses on Manufacturing enclaves, Innovation Centres, Manufacturing Support Services, Multi Skill Development Centre. It also includes the social infrastructure like housing, convention centre, commercial area and range of services that are essential for a large urban development project of this scale.

- **Land** – Shovel Ready developed plots with road, drainage, water supply, Water Treatment Plants (WTP), Sewage Treatment Plants (STP) and other similar facilities
- **Water** – Potable water from ground as well as from dam
- **Power** – 230 /110 KV level dedicated sub-station

The entire infrastructure shall be developed and maintained by GMR Group underscoring its commitment to quality, service and timelines. The “integrated” design will endeavour to provide world standard residential, social and commercial amenities making this zone a truly “self-contained” area.



Training empowers people to
realize their dreams and improve
their lives.





SERVICES BUSINESS (GMRSB)

Outsourcing of services to achieve efficiency and economy in operations with an overall objective of adding value to the business is a strategy that is being pursued by many progressive corporates the world over. This is also getting reflected in the rapid growth worldwide in the services sector.

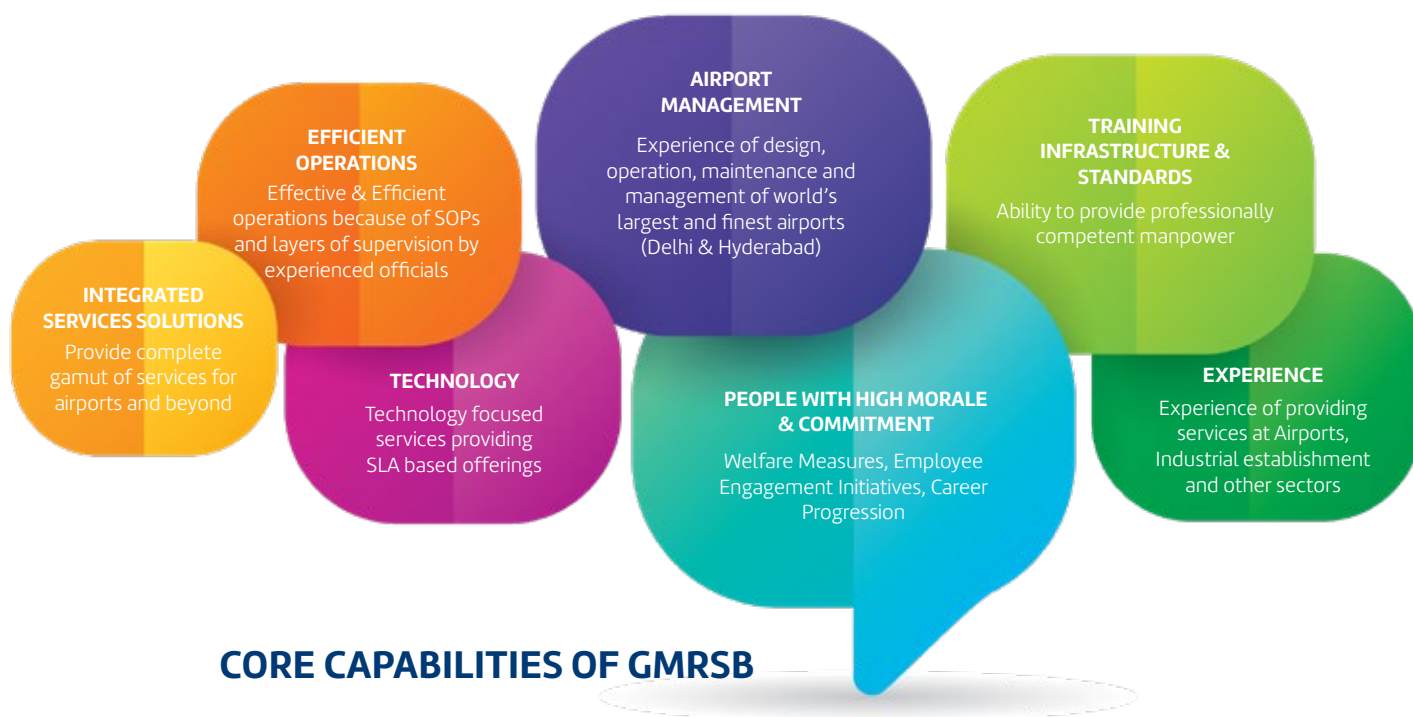
Realizing the growing need to achieve this objective, GMR Services Business has been formed to offer under its umbrella a bouquet of services to diverse organizations, albeit with a special focus on airports. The tremendous experience and expertise gained over the years by the GMR group in the creation and subsequent operation of prominent airports in India and overseas has enabled the new business to leverage and offer this experience and expertise in the form of much needed services by airports and other organizations. The airports at Delhi and Hyderabad have indeed emerged as the finest airports in the world in their respective categories.

GMRSB Portfolio



ALLIED SERVICES

- Bridge Mounted Equipment (BME) & Passenger Boarding Bridges (PBB) Services
- Airport Rescue & Fire Fighting (ARFF)
- Terminal Operations
- Environmental Management
- Airport Operation Control Centre (AOCC)
- FBO Services
- Airport Management Consultancy







GMR Group believes that its responsibility goes beyond business gains. This translates into a deep sense of ownership and practice of the Social Responsibility concept. Adopting a bottom-up approach, the Group takes up long term initiatives with communities neighbouring its businesses.

GMR Varalakshmi Foundation (GMRVF), the Corporate Social Responsibility wing of the Group, develops innovative and locale-specific initiatives which span the areas of Education, Health, Hygiene & Sanitation, Empowerment & Livelihoods and Community development programmes. The vision of Foundation is to make sustainable impact on the human development of communities through initiatives in Education, Health and Livelihoods.

The Foundation is registered as a Section-8 (not-for-profit) Company and has its own separate Board comprising of eminent people in the field. The Board is chaired by Shri GM Rao, Group Chairman, GMR Group. The mandate of the Foundation is to improve the quality of life of communities neighboring GMR Group's business operations. Currently, the Foundation is working in about 200 villages and urban communities across 15 locations and supporting 1 location in Nepal.

Education

GMRVF believes that quality education must be accessible to all. Towards this objective, it sets up and runs educational institutions of excellence, and also works with communities and government schools.



Educational institutions run by GMRVF:

Type of Institution	No. of Institutions	No. of Students
GMR Institute of Technology	1	3500
SGCSR College	1	1600
Schools	4	4000

Educational scholarships/support provided

- Higher/Professional education : Over 7,500
- Gifted Children (complete Education) : Over 250

Support for Government schools

- Schools being partnered : About 200
- Students impacted : More than 35,000

Pre-school initiatives

- Balabadis/Partnered Anganwadis : Over 150
- Children impacted : Over 6,000

Kid Smart Technology-enabled Centres : 30

Empowerment and Livelihoods



The objective behind Empowerment and Livelihoods activities of GMRVF is to channelize the energies of youth and women towards entrepreneurship and livelihood development, so that they can participate equitably in economic progress.

- GMRVF runs 15 Vocational Training Institutes which train about 7000 unemployed youth every year in different skills.
- Apart from technical skills, soft skills including communication, spoken English are imparted to the trainees
- Foundation has partnered with National Skill Development Corporation for the PMKVY (Pradhan Mantri Kaushal Vikas Yojana) and the RPL (Recognition of Prior Learning) programme.
- Over 65,000 youth have been trained so far with 85% of them settled in jobs or self-employment.
- GMRVF works with about 1 00 Self Help Groups to strengthen their processes and enhancing livelihoods.
- Products made by women groups are marketed through shops at Hyderabad airport, bulk orders for conferences and seminars, setting up of stalls and exhibitions and also through e-retailers like Amazon, Flipkart etc.
- Foundation supports about 1700 rural families with farm inputs, training on farming techniques, market linkages etc. to enhance their incomes.

Health, Hygiene & Sanitation

Recognizing that good health is integral to quality of life, GMRVF strives to improve the quality of life of the communities it works with by bringing health care to their doorstep and by creating awareness about hygiene and sanitation issues. It also builds and maintains community toilets and supports sanitation at household level in selected communities.



The health facilities currently under operation include:

- 200 bed hospital at Rajam, Srikakulam Dist., Andhra Pradesh with CARE Hospitals
- 30 bed hospital at Kamalanga, Odisha
- Mobile Medical units : 8 (over 20000 cases per month)
- Community Medical clinics : 21
- Nutrition Centres for Pregnant & Lactating women : 15
- Public and Community toilets built : 20 No. of users: 40,000/month
- Individual Sanitary Latrines supported : Over 2000
- School health check-up annual average coverage : Over 10,000

Community Development



GMRVF works with communities to strengthen community institutions, enhance awareness and involvement on key development initiatives. The approach is to do a thorough analysis of what is holding the community back and then to work with it in overcoming those barriers.

The process aims at the overall development of communities at all locations by Interventions which include: Running Career counselling-cum-coaching centres, Community libraries & Information centres, and services for differently-abled.



SPORTS

Incorporated in 2008, the division was initiated with the belief that sports provides a connect with the community at large. Cricket particularly is celebrated in the country, and to be associated with the sport was the group's first initiative.

The capital's IPL franchise, Delhi Capitals, marked the beginning of this venture, followed by the Uttar Pradesh (UP) franchise of the Pro - Kabaddi league - UP Yoddha. With a number of local kabaddi tournaments in the region, finding fresh and new local talent is part of the long-term agenda of the business.



Delhi Capitals

The Delhi Capitals is a franchise cricket team that represents the city of Delhi in the Indian Premier League (IPL). Established in 2008 as Delhi Daredevils (DD), the franchise is jointly owned by the GMR Group & JSW Group.



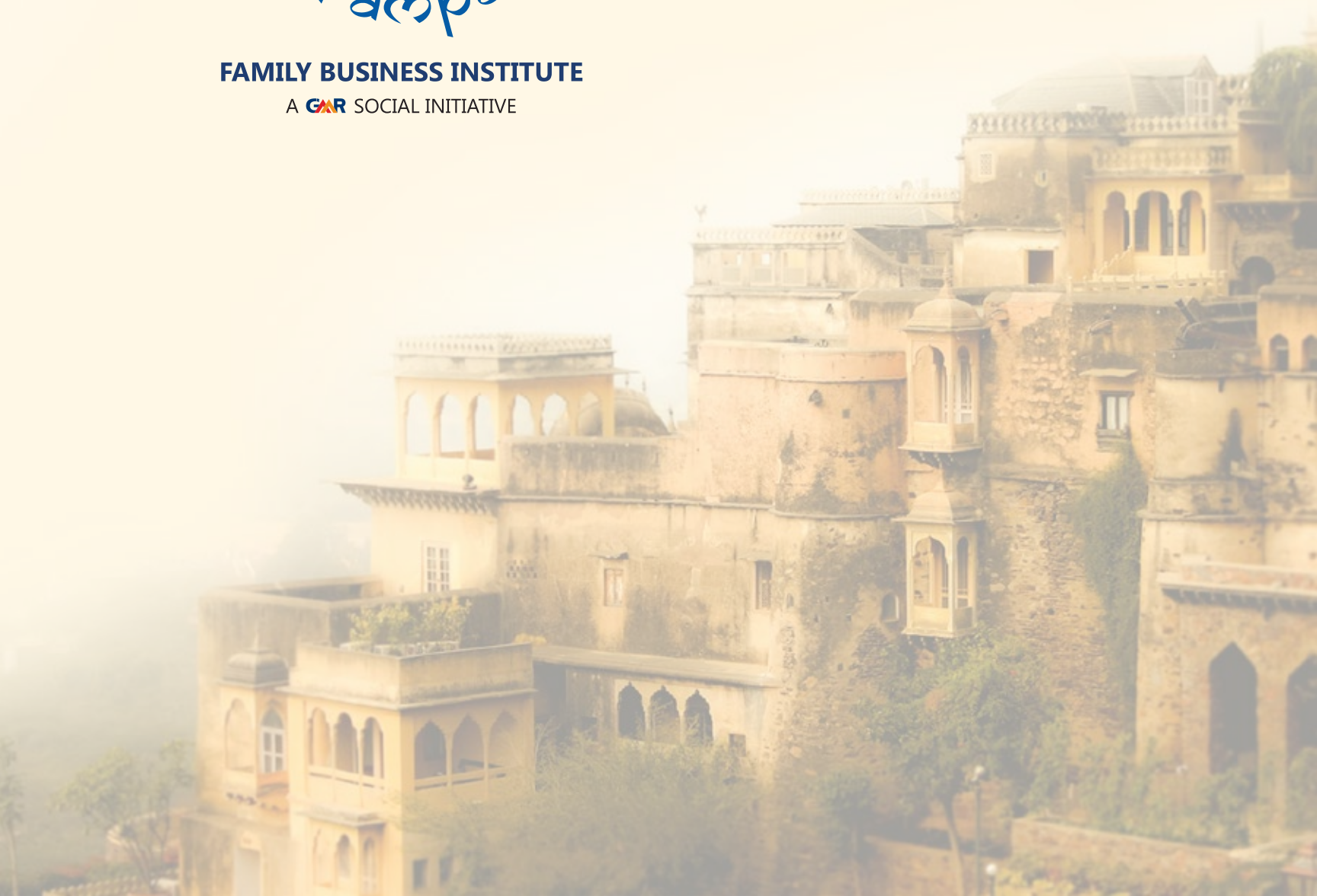
UP Yoddha

U.P. Yoddha is the Kabaddi franchise in the Pro Kabaddi League. The team captures the warrior spirit of Uttar Pradesh. Since inception, it has emerged amongst the most popular teams and has performed consistently well in the league.



FAMILY BUSINESS INSTITUTE

A  SOCIAL INITIATIVE



Parampara Family Business Institute

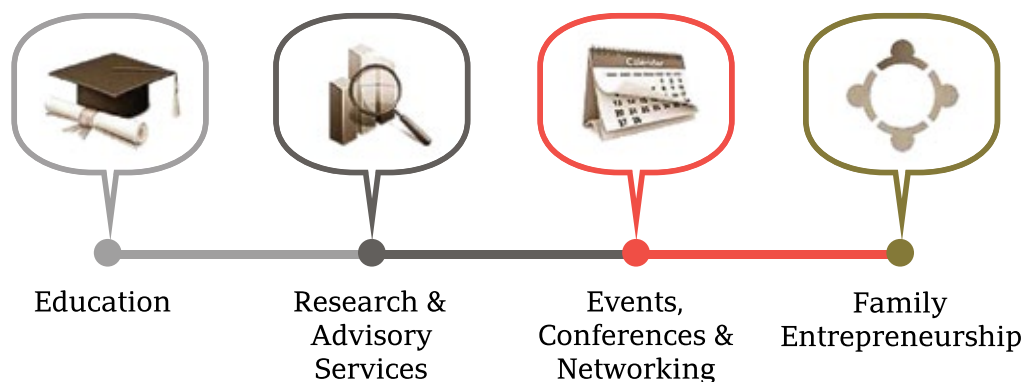
Parampara Family Business Institute (PFBI) is a Not-for-profit, GMR social initiative that seeks to contribute to national development, working towards inspiring emerging family business to focus on the development of the family and the business through strong governance and entrepreneurship.

PFBI serves as an Education and Research platform to enable family businesses sustain, grow and perpetuate through generations. It engages with family businesses in four evolving stages:



The Institute will provide state-of-the-art expertise through research, global partnerships and knowledge exchange. Entrepreneurship Development in family businesses will be a mission critical objective of the Institute.

Services provided by PFBI



PROMINENT AWARDS & RECOGNITION

CORPORATE

1. Most Caring Company Award
2. Best Talent Management Award from ET Now and World HRD Congress at the Talent & HR Leadership Conference & Award event.
3. Most Admired Infrastructure Company Award at 5th KPMG Infrastructure Today Awards.

ENERGY

1. Global performance Excellence Award by APQO in area of Business Excellence.
2. British safety 5 star rating for effective implementation of Occupational health and safety management system at GWEL.
3. CII National Award for Environmental Best Practices 2021 to GKEL and GWEL.
4. National Awards for Excellence in Energy Management 2021 to GKEL and GWEL.
5. Pollution Control Excellence Award 2020 to GKEL
6. National Award for Excellence in Water Management 2021 to GWEL.
7. ICC Occupational Health & Safety Silver Award 2021 to GKEL

AIRPORTS

Indira Gandhi International Airport, Delhi

1. Best Airport in Asia Pacific in the category of over 40 million passengers per annum(mppa) by Airports Council International (ACI) for Airport Service Quality (ASQ) for three consecutive years (2018 to 2021).
2. Skytrax Award for Best Airport in India and Central Asia (2017, 2019, 2020 & 2021)
3. Platinum Recognition'(highest category) in ACI Asia-Pacific Green Airports Recognition 2021
4. First Airport in Asia Pacific region to achieve "Level 4+, Transition" under Airport Carbon Accreditation of ACI (2020)

Rajiv Gandhi International Airport, Hyderabad

1. Best Airport in Asia Pacific in the category of 15-25 million passengers per annum(mppa) by Size and Region by Airports Council International (ACI) for Airport Service Quality (ASQ) in 2020 & 2021.
2. Best Regional Airport in India and Central Asia by Skytrax in (2019 & 2020)
3. 'Best Airport in Environment & Ambience by Size', Asia-Pacific region for 2019, in its category of 15-25 MPPA by ACI
4. Achieved "Level 3+, Neutrality" under Airport Carbon Accreditation of Airports Council International (Achieved in 2016, renewed in 2019).

TRANSPORTATION

1. GMR Group awarded highest technical points among road developers by the Union Ministry of Road Transportation, Highways, Government of India.
2. Won two Awards in 2 different categories in the 7th CIDC Vishwakarma Awards i.e.
 - GMR Highways Ltd has won the "Best Professionally Managed Company" Award,
 - GMR OSE Hungund Hospet Highways Pvt. Ltd has won the "Award in Best Constructed Project"
3. Won prestigious Dun & Bradstreet's Infra Award for exemplary performance in CORR project

GMR VARALAKSHMI FOUNDATION

1. CSR Excellence Award for GHIAL from Institute of Company Secretaries of India 2018
2. Golden Peacock Award for Corporate Social Responsibility for CSR at GMR Hyderabad International Airport Ltd. 2017
3. PHD Chamber of Commerce Award for Outstanding Contribution to Social Welfare for GMRVF 2015-16
4. FICCI-Corporate Social Responsibility Award for CSR at Delhi International Airport Ltd 2015
5. Mahatma Gandhi Award for Social Good 2021
6. CSR Award from Indo-French Chamber of Commerce and Industry (IFCCI) 2021
7. TERI Corporate Award for Social Responsibility 2009

MEMBERS OF GMR GROUP HOLDING BOARD



G M Rao
Group Chairman



Srinivas Bommidala



G B S Raju



Kiran Kumar Grandhi



B V Nageswara Rao



GMR Group

New Udaan Bhawan, Opp. Terminal 3
Indira Gandhi International Airport, New Delhi – 110 037



Airports



Energy



Transportation



Urban Infra



Services



Foundation